



GRF One Health Summit 2012

One Health – One Planet – One Future
Risks and Opportunities

International Conference
19–23 February 2012
Davos, Switzerland

3rd Announcement

Programme & Exhibition

Global Risk Forum
GRF Davos



onehealth.grforum.org



Chairman's Statement



Dr Walter Ammann,
President GRF Davos

As an earthquake engineer by education, my daily work unfolded around cost-effective risk management of natural or technical hazards for sustainable development on a global scale. My professional interest in public health might therefore not be straight forward at first sight. However, the direct inter-linkages are manifold.

For instance, in the aftermath of a natural disaster the population affected immediately faces health threats not only from injuries suffered but also epidemics prompted by interruptions in sanitation services. A different example is currently shown in Japan, where radiological contamination as a consequence of a cascading effect led to a nuclear catastrophe and puts thousands of people at risk.

Holistically managing such health threats is in line with our multi-measures and multi-stakeholder risk management solution at GRF Davos. One Health – a school of thought that acknowledges the systemic nature of public health by linking human, animal and environmental factors – provides an excellent basis for doing so.

I am looking forward to discuss innovative measures for integrative health risk management at the GRF One Health Summit 2012 with representatives from the health workforce, agriculture, pharmaceutical and food industry, science and policy.

*„From Thoughts to Action“
by closely linking practice, science,
policy and decision making in the
search for sustainable solutions.*



Dr Walter J. Ammann
President and CEO Global Risk Forum GRF Davos
Chairman GRF One Health Summit 2012



What does "One Health" stand for?

Integration of Human, Animal and Environmental Health in close relation to Agricultural Production and Food Safety/Security

Public health is not only determined by socio-economic factors, but also significantly influenced by animal health, the environment, agricultural food production and food safety and security. For instance, the avian and swine influenza impressively demonstrate health related human-animal interference; environmental pollution is a significant driver of cancer or allergies, and a society's nutrition pattern strongly influences public health.

Bundled under the term "One Health", the GRF One Health Summit 2012 addresses health at the interface of human-, animal- and environmental health and ties the knot to food safety and security. Striving for intensified collaboration among experts and practitioners from the different sectors and disciplines tangent to such a comprehensive health perspective, especially the pharmaceutical and food industry as well as health insurers engagement will provide significant added value.

Integrative Components of One Health are:

- ⊙ Human Health
- ⊙ Animal Health
- ⊙ Environmental Health
- ⊙ Food Safety and Security
- ⊙ Agriculture





Why support One Health?

Towards Integrative Health Risk Management – Collaboration among Sectors and Disciplines for Cost-Effective Overall Risk Reduction

The Global Risk Forum GRF Davos actively promotes and fosters an integrative approach in managing environmental, technical, societal or economic risks. Such a holistic method must account for multiple hazards and integrate the knowledge of all disciplines in order to produce cost-effective measures.

The concept of One Health asks for more, better and closer cooperation between the many actors and agents related to health. GRF Davos aims to pool the two concepts of One Health and Integrative Risk Management to save lives and livelihoods, improve public health and reduce costs. Additionally, much attention is given to issues regarding agricultural production and food safety and security. This integrative management strategy is a key tool to ensure sustainable public health in an era of climate change, resource depletion, land degradation, urbanisation, hunger and development challenges.



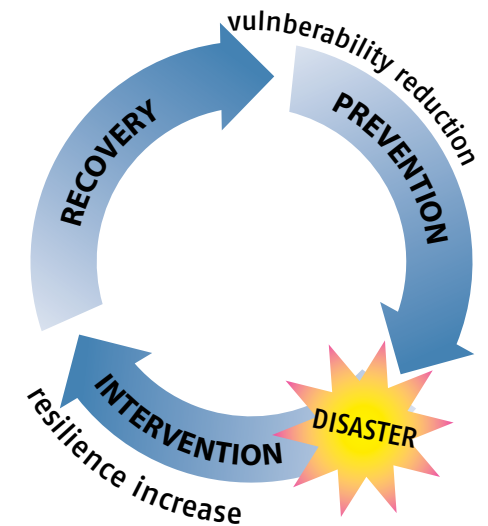
The Integrative Risk Management Approach:

How to cope with the broad array of risks and disasters society is facing today?

A multi- sectors, multi- stakeholders and multi- disciplines approach is needed to assess and reduce risks and manage risks and disasters at all levels. Inter- and transdisciplinarity is essential.

The multi measures approach along the risk cycle in Integrative Risk Management

Integrative risk reduction and disaster management implies vulnerability reduction and resilience increase. A multi-measures approach along the risk cycle including prevention, intervention and recovery is required.





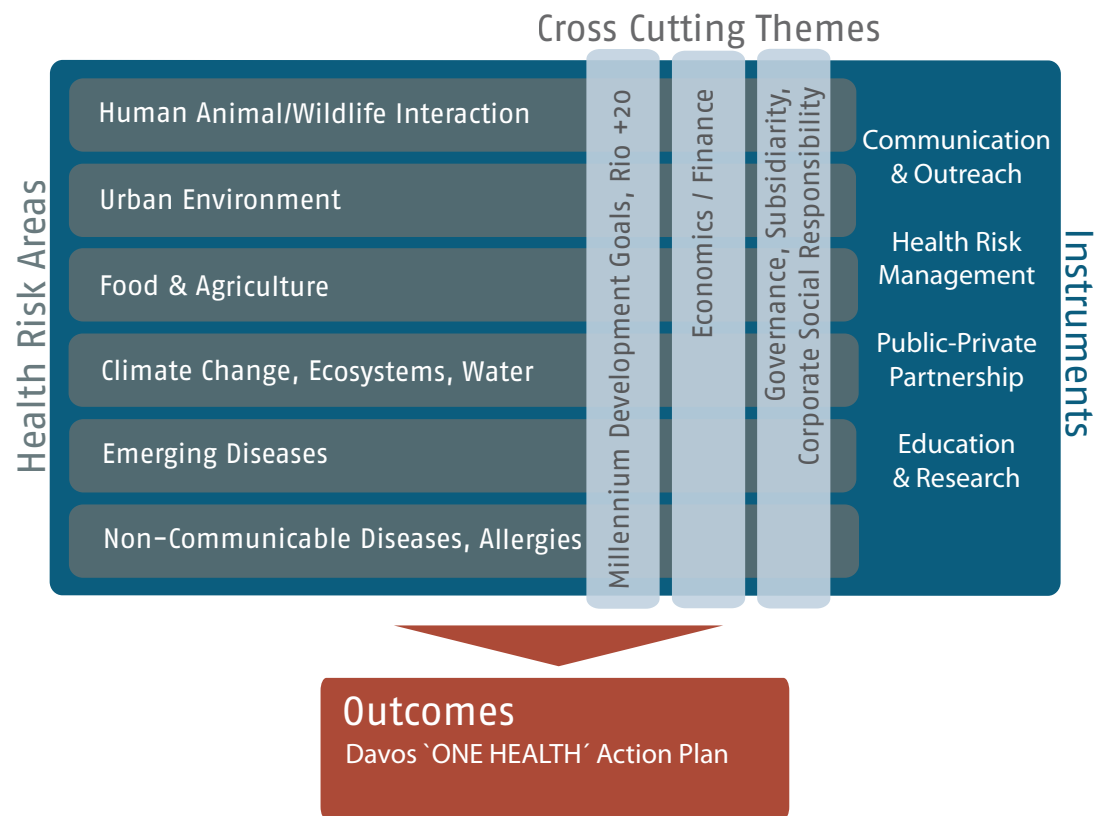
What will be achieved?

The "Davos One Health Action Plan"

The envisaged outcomes of the GRF One Health Summit 2012 are to further explore, advance and agree on the need for a global integrative One Health approach, to advocate and mobilize resources for closer cooperation between regions, disciplines, sectors and the growing variety of stakeholders, to investigate the need for a global subsidiarity principle and to promote enhanced PPP-models. The conference shall end by approving the "Davos One Health Action Plan", pinpointing ways on how to achieve added value by multi-sectorial and multi-stakeholder cooperation.

Thematic Context

Uniquely, the GRF One Health Summit 2012 addresses the future of truly integrative health risk management in the context of the following areas of selected health risks, important cross-cutting themes and instruments for applicable solutions:





Specific Topics, Methodologies, Tools and Frameworks

Specific Topics for Abstract Submission

Public Health

healthcare services
 pandemics
 pet animals
 pharmaceuticals,
 vaccination & resistances
 public health
 sanitation & hygiene
 socio-economic
 determinants

Environment

biodiversity
 ecosystem goods &
 services
 fisheries & wildlife
 land degradation
 logistics & transportation
 natural hazards
 pollution
 resource depletion
 water & energy

Global Change & Sustainable Development

climate change
 demographics
 globalisation
 displacement & migration
 globalisation
 poverty
 sustainable development
 urbanisation



Diseases

allergies
 communicable diseases
 emerging diseases
 lifestyle diseases
 mental illnesses
 non-communicable
 diseases
 wildlife diseases
 zoonoses

Food & Agriculture

agricultural production
 agro chemistry
 biofuel
 food design
 food safety & security

Methodologies, Tools and Frameworks for Abstract Submission

Health Risk Management

best practice
 ethics & stewardship
 integrative risk
 management
 intervention/response
 recovery/rehabilitation
 resilience & adaptation
 best practice

Financial Tools

financing methods
 funding strategies
 insurance
 sustainable investments

Capacity Enhancement

capacity building
 education
 research, innovation &
 technology
 social learning &
 behavioural change



Early Warning & Prevention

early warning
 monitoring, surveillance &
 early detection
 predictive modeling
 preparedness

Collaboration

alliances & partnerships
 communication
 corporate social
 responsibility
 institutions
 One Health strategies
 policy & governance
 public diplomacy



Programme

The GRF One Health Summit 2012 features various session formats such as workshops, parallel sessions and plenary panel discussions.

The GRF One Health Summit 2012 programme consists to a large part of topical plenary sessions with keynote presentations and panel debates. Accepted contributions submitted to the call for abstracts will be presented in parallel and poster sessions. Scientific, operational and policy-oriented discussions will evolve; workshops will be held to foster good practice and experience exchange, discuss state of the art research and build capacity. A number of working groups will address specific topics and come up with suggestions to be integrated into the Davos One Health Action Plan.

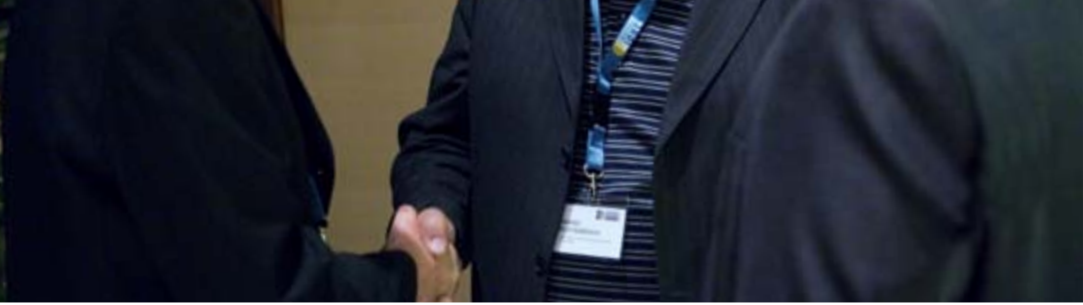
Social events and company exhibitions offer additional opportunities to discuss ideas, initiate partnerships and increase networks.

Formats Summary:

- ⦿ plenary sessions with keynotes & panel debates
- ⦿ parallel sessions
- ⦿ poster exhibition
- ⦿ company exhibition
- ⦿ workshops
- ⦿ working groups

Programme Structure

	Sat, 18.02	Sun, 19.02	Mon, 20.02.2012	Tue, 21.02.2012	Wed, 22.02.2012	Thur, 23.02	Fri, 24.02
			Exhibition	Exhibition	Exhibition		
8.30-10.00	Pre Conferences & Workshops		Opening Plenary	Parallel Sessions	Semi-Plenary VI Semi-Plenary VII		
			Break	Break	Break		
10.30-12.00			Plenary I	Plenary IV	Plenary VIII		
12.00-13.00			Networking Lunch in Exhibition Area	Networking Lunch in Exhibition Area	Networking Lunch in Exhibition Area		
13.00-14.15			Workshop Parallel Sessions	Workshop Parallel Sessions	Parallel Sessions Working Groups		
			Break	Break	Break		
14.30-16.00			Working Groups	Working Groups	Closing Ceremony		
			Break	Break			
16.30-18.00			Semi-Plenary II Semi-Plenary III	Plenary V			
			Break	Break			
18.30-20.00		Poster Session & Dinner Buffet in Exhibition Area	Poster Session & Dinner Buffet in Exhibition Area				
20.00-21.00							
			Welcome Reception	Networking Evening			
						Post Conferences & Workshops	



Participants Profile

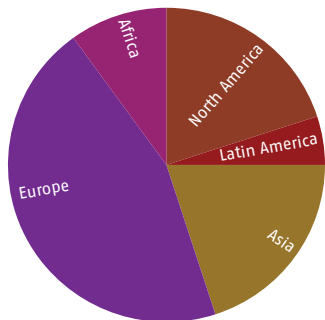
An international gathering of top experts, opinion leaders and decision makers from the health sector, academia, food & pharmaceutical industry and public services

The GRF One Health Summit provides vast opportunities for knowledge and experience exchange, first-hand information and networking. Take stock of what has already been achieved through co-ordinated multi-sectorial approaches so far and learn which strategies might prove most effective.

Participation is recommended for representatives and delegates from:

- ⦿ science and research (medical, natural, economic and social sciences)
- ⦿ the health workforce
- ⦿ the pharmaceutical and food industry
- ⦿ the insurance and financial services
- ⦿ international organisations (including the United Nations and the European Union)
- ⦿ public authorities
- ⦿ civil society

Geographic Region



In regard of the expanding One Health community, we expect up to 700 participants. Participation is expected to follow the subsequent distribution according to affiliation and geographic region:

Affiliation



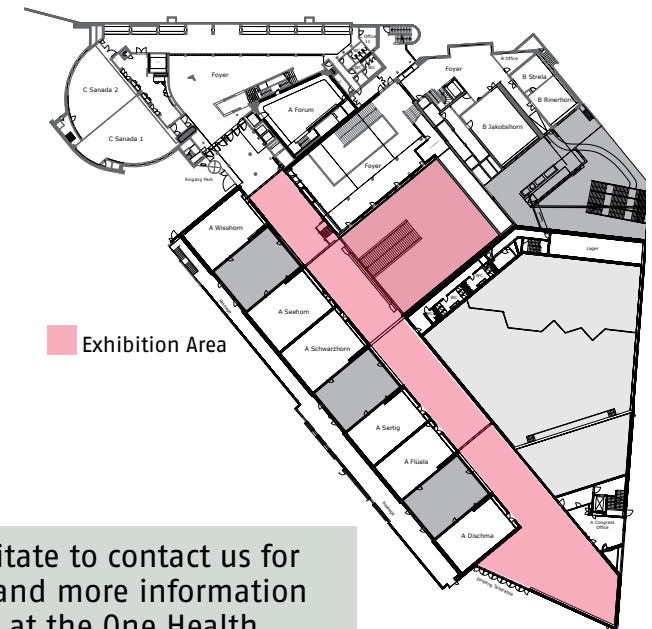
Exhibiting

The One Health Summit offers approximately 1'450m² of exhibition space.

Within the Exhibition Area, companies and organisation have the opportunity to present their products, institution and meet potential job seekers.

In order to maximise the time participants spend in the exhibition area, refreshment points are integrated. The exhibition area is strategically situated, so that participants have to pass by on their way to plenary and parallel sessions.

Davos Congress Centre Exhibition Area:



Please do not hesitate to contact us for exhibition prizes and more information on how to exhibit at the One Health Conference.



Organisation – GRF Davos

The One Health Conference is organised by the Global Risk Forum GRF Davos



Through its various activities, GRF Davos serves as a centre of knowledge and know-how exchange for the application of timely risk management strategies, tools and practical solutions.

GRF Davos aims at reducing vulnerability and increasing resilience for all types of risks and disasters to protect life, environment, critical infrastructure, property and all means of business for the worldwide community on a sustainable basis.

GRF Davos addresses global issues on risk reduction, disaster management and global changes through three focal activities that complement each other.

GLOBAL RISK FORUM GRF DAVOS

IDRC CONFERENCES

Biennial IDRC Davos
IDRC Regional Conferences
and Workshops

RISK ACADEMY

Knowledge Management
Continuous Education
Trainings
Research and Development
Public Awareness Raising
E-Journal

PLATFORM

GRF Circles
Open Circles
Closed Meeting Rooms

For more information on GRF Davos please visit www.grforum.org

Get in Touch

Global Risk Forum GRF Davos
Promenade 35
CH-7270 Davos Platz
Switzerland

Tel. +41 (81) 414 16 00

Fax. +41 (81) 414 16 10

e-mail: info@grforum.org

<http://www.grforum.org>

<http://onehealth.grforum.org>

